

Date \_\_\_\_\_  
Customer code C- \_\_\_\_\_  
Customer \_\_\_\_\_  
Contact person \_\_\_\_\_  
Reference \_\_\_\_\_

Delivery Address

\_\_\_\_\_

\_\_\_\_\_

Invoice Address

\_\_\_\_\_

\_\_\_\_\_

- ☐ Quote  
☐ Invoice address = delivery address  
☐ The chair will be used as seat for car transport

**Basic price: 3.900,- € excl. VAT**



**Seat width**

- D90025 ☐ 250 mm  
D90030 ☐ 300 mm  
D90035 ☐ 350 mm



**Seat width reduction pads D90054 153 €**

- ☐ Seat width reduction pads  
Reduces the seat width with up to 35 mm per side. The pads can be adjusted in depth, height and stepless in width.

**Seat depth**

- ☐ 250 mm  
☐ 275 mm  
☐ 300 mm  
☐ 325 mm  
☐ 350 mm (only by SW 300 & 350 mm)  
☐ 395 mm (only by SW 350 mm with SD extension – D91502)  
☐ 440 mm (only by SW 350 mm with SD extension – D91503)



**Capacity** Max. 75 kg

**Seat Height** 440 mm by 16" wheels  
470 mm by 22" wheels

## HEAD SUPPORTS & ACCESSORIES



[A]	[B]	[C]	[D]	[E]	[F]	
Item nr.	Description					Price in €
D86133	<input type="checkbox"/>	[A] Head support A mini with side supports 150 mm horizontal bar, 350 mm vertical bar				432,-
D23973	<input type="checkbox"/>	[A] Head support A mini with side supports 150 mm horizontal bar, 200 mm vertical bar				431,-
D20574	<input type="checkbox"/>	[B] Head support B, small, oval 150 mm horizontal bar, 350 mm vertical bar				242,-
D21027	<input type="checkbox"/>	Head support adjustment tube (horizontal) + 100mm, length 250mm				95,-
D21028	<input type="checkbox"/>	Head support adjustment tube (horizontal) + 230mm, length 380mm				105,-
D21054	<input type="checkbox"/>	Head support adjustment tube (vertical) 500 mm				95,-
D23012	<input type="checkbox"/>	Easy Care cover for head support type A or B - removable				95,-
D45365	<input type="checkbox"/>	[C] Savant Pediatric head support incl. headband 250 mm horizontal bar for Netti wheelchairs 350 mm vertical bar User forehead 360-460 mm User ½ circumference behind ears 130-150 mm Inside distance along top support 230 mm, along middle support 130 mm, height 120 mm (not approved for car transport – if this is needed, please order an additional Netti head support)				On request
D45366	<input type="checkbox"/>	[C] Savant Small head support incl. headband 250 mm horizontal bar for Netti wheelchairs 350 mm vertical bar User forehead 460-560 mm User ½ circumference behind ears 150-180 mm Inside distance along top support 300 mm, along middle support 180 mm, height 130 mm (not approved for car transport – if this is needed, please order an additional Netti head support)				On request
D45373	<input type="checkbox"/>	[D] Side pads for Savant head support. For extra lateral support. For the upper arms of the head support.				On request
D45375	<input type="checkbox"/>	Head support adjustment tube (horizontal) + 100mm for Savant head rest, length 250mm				On request
D23015	<input type="checkbox"/>	[E] Grey head support cushion, universal, with Mars cover				242,-
D45368	<input type="checkbox"/>	[F] Axion head support rotary interface, permits a lateral rotation of 60°, for Savant head support (not approved for car transport – if this is needed, please order an additional Netti head support)				On request
D45376	<input type="checkbox"/>	Axion head support rotary interface, permits a lateral rotation of 90°, for Savant head support (not approved for car transport – if this is needed, please order an additional Netti head support)				On request
D89558	<input type="checkbox"/>	[F] Axion head support rotary interface, permits a lateral rotation of 60°, for Netti head support				On request

		(not approved for car transport – if this is needed, please order an additional Netti head support)	
D89559	<input type="checkbox"/>	Axion head support rotary interface, permits a lateral rotation of 90°, for Netti head support (not approved for car transport – if this is needed please order an additional Netti head support)	On request

## BACK UNIT



Standard	<input checked="" type="checkbox"/>	[A] Back cushion Netti Smart with ventilating 3D cover Black & red 100 mm side supports	0,-
D90350	<input type="checkbox"/>	Netti Smart with black cover	0,-
D90123	<input type="checkbox"/>	[B] Back cushion Netti S Super Stabil with good lateral support 150 mm side supports Ventilating 3D cover Black & red	654,-
Standard	<input checked="" type="checkbox"/>	[C] Adjustable velcro back	0,-
Standard	<input checked="" type="checkbox"/>	Back height 400 mm, back cushion can be adjusted up to 500 mm	0,-
D91006	<input type="checkbox"/>	[D] Back extender + 100 mm - for better support of the back cushion. SW 250 and 300 mm will be supplied with a cushion back height 400 mm. SW 350 mm will be supplied with a back cushion with back height 500 mm (120 mm side supports) and black cover.	311,-
D88810	<input type="checkbox"/>	[E] Lateral supports stabilizing the sides of the Netti S Super Stabil back cushion, height and sideways adjustable, pair	144,-
	<input type="checkbox"/>	Ride Designs Decaf Back solution (See separate order form – for SW 250 + 300 mm only as special adaptation) Article number: _____ / Accessories: _____	
D21042	<input type="checkbox"/>	Lumbar support	189,-

## Belts for back unit



[A]

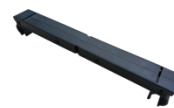
[B]

[C]

[D]

D90890	<input type="checkbox"/>	[A] H-belt bracket for optimum mounting of belt, height adjustable. Package of different fix locks for mounting included.	278,-
D41645	<input type="checkbox"/>	[B] Belt cross harness	200,-
		[C] Bodypoint Stayflex chest support (without zipper)	274,-
D89805	<input type="checkbox"/>	XS (Shoulder width 240-280 mm)	
D89898	<input type="checkbox"/>	S (Shoulder width 280-330 mm)	
D86895	<input type="checkbox"/>	M (Shoulder width 330-410 mm)	
		[D] Bodypoint Pivofit shoulder harness	274,-
D89801	<input type="checkbox"/>	XXS (Shoulder width 210-240 mm)	
D89802	<input type="checkbox"/>	XS (Shoulder width 240-280 mm)	
D89803	<input type="checkbox"/>	S (Shoulder width 280-330 mm)	
D86898	<input type="checkbox"/>	M (Shoulder width 330-410 mm)	

## SEAT UNIT



[A]

[B]

[C]

[D]

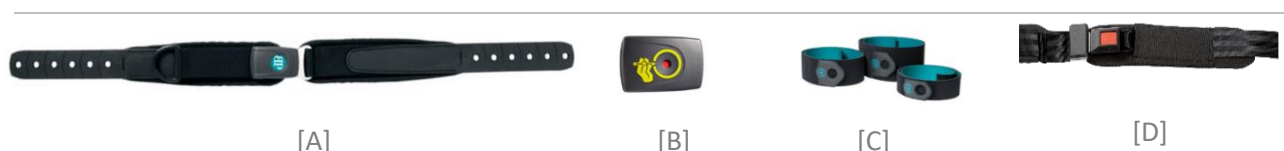
[E]

[F]

Standard	<input checked="" type="checkbox"/>	[A] Readable tilt position -3 to 35°	0,-
Standard	<input checked="" type="checkbox"/>	[B] Netti S Sit seat cushion Pressure relief seat cushion with incontinence layer under the ventilating 3D cover	0,-
D21300	<input type="checkbox"/>	Extra 3D cover for Netti S Sit	158,-
	<input type="checkbox"/>	[C] Ride Designs Forward cushion – see special order form Item no: _____ Accessories: _____	
Standard	<input checked="" type="checkbox"/>	[D] Seat plate that can be adjusted up to 100 mm in depth	0,-
D91502	<input type="checkbox"/>	[E] Seat depth expansion. Expands the seat depth by 45 mm reaching seat depth of 395 mm. <b>Only available for seat width 350 mm. Combination with abduction block only as special adaptation.</b> Seat cushion: Netti Sit, black 3D cover, seat depth 400 mm	66,-

D91503	<input type="checkbox"/>	[E] Seat depth expansion. Expands the seat depth by 2 x 45 mm reaching seat depth of 395 mm or 440 mm. Reinforced extension pieces included. <b>Only available for seat width 350 mm. Combination with abduction block only as special adaptation.</b> Seat cushion: Netti Sit, black 3D cover, seat depth 450 mm	287,-
		[F] Abduction block (combination with seat depth expansion only as special adaptation )	215,-
D88822	<input type="checkbox"/>	Mini (W: 40-60 mm, L: 100 mm, H: 50 mm)	
D88823	<input type="checkbox"/>	Small (W: 80 mm, L: 140 mm, H: 80 mm)	

### Belts for seat unit



		[A] Bodypoint Evoflex 2-point pelvic stabiliser incl. mounting kit	
D45021	<input type="checkbox"/>	XS (Overall pad length: 380 mm)	210,-
D45022	<input type="checkbox"/>	M (Overall pad length: 460 mm)	210,-
D45040	<input type="checkbox"/>	[B] Security cover for 2-point pelvic stabilizer	74,-
D45084	<input type="checkbox"/>	[C] Bodypoint supportive universal elastic strap S (Height 80 mm - 1420 mm long, easily cut-to-length)	189,-
D20845	<input type="checkbox"/>	[D] Hip belt, with upholstery and car belt lock	126,-

### ARM SUPPORTS AND ACCESSORIES FOR ARM SUPPORT



Standard	<input checked="" type="checkbox"/>	Arm support height and depth adjustable, can be adjusted up to 240 mm measured from seat plate. Readable horizontal scale.	0,-
Standard	<input checked="" type="checkbox"/>	2 positioning screws allow for limiting the arm support height	0,-
Standard	<input checked="" type="checkbox"/>	Arm pads 330 x 55 mm, depth adjustable	0,-
Standard	<input checked="" type="checkbox"/>	Cloth protector	0,-
D21096	<input type="checkbox"/>	Arm pads 385 x 58 mm	126,-
D21077	<input type="checkbox"/>	Arm pads 420 x 80 mm	126,-

D21078	<input type="checkbox"/>	Arm pads 445 x 70 mm	126,-
D21079	<input type="checkbox"/>	Arm pads 525 x 80 mm	126,-
D21927	<input type="checkbox"/>	Arm pads curved at the back 525 x 80 mm	168,-
D41648	<input type="checkbox"/>	Soft 3D upholstery for the arm pads (330x55)	116,-
D41649	<input type="checkbox"/>	Soft 3D upholstery for the arm pads for armpad D21096 (385x58 mm)	116,-
D41650	<input type="checkbox"/>	Soft 3D upholstery for the arm pads for armpad D21077 (420x80 mm)	137,-

## LEG SUPPORTS AND ACCESSORIES



[A]



[B]



[C]



[D]

Standard	<input checked="" type="checkbox"/>	[A] <b>Universal leg supports</b> with knee angle adjustment, heel strap and firm footboard, black (can only be removed with tools).	0,-
D91011	<input type="checkbox"/>	[B] <b>Angle adjustable leg supports</b> with automatic length adjustment, angle adjustable foot plates, calf supports and knee upholstery, black.	426,-
D91041	<input type="checkbox"/>	Firm foot board for manual adjustable leg supports (D91011/ can only be removed with tools).	0,-
D23114	<input type="checkbox"/>	[C] Foot box upholstered for manual adjustable leg supports (universal or angle adjustable D91011, can only be removed with tools).	315,-
		[D] Bodypoint ankle huggers	
D44863	<input type="checkbox"/>	S (Length: 170-200 mm)	242,-
D44864	<input type="checkbox"/>	M (Length: 190-230 mm)	242,-
D44865	<input type="checkbox"/>	L (Length: 220-290 mm)	252,-

## FRAME



[A]



[B]

Standard	<input checked="" type="checkbox"/>	[A] Push bow long 500 mm, height, and angle adjustable	0,-
----------	-------------------------------------	--	-----

D89350	<input type="checkbox"/>	[A] Push bow short 380 mm, height, and angle adjustable	66,-
D88203	<input type="checkbox"/>	[B] Car fasteners	175,-
Standard	<input checked="" type="checkbox"/>	Antitippers with pedal, swingable	0,-

## MAIN WHEEL



Standard	<input checked="" type="checkbox"/>	[A] 22" drum break wheels, 4° camber, black tires	0,-
D90235	<input type="checkbox"/>	[C] 16" drum brake wheels with centre brake	88,-
D88831	<input type="checkbox"/>	[B] Mud guards for 22" wheels, pair	632,-
D22009	<input type="checkbox"/>	[D] Hand and spoke protector for 22" wheels, transparent, pair	158,-
D22013	<input type="checkbox"/>	[E] Push rim cover for 22" wheels, pair	126,-

## FRONT WHEELS

Standard	<input checked="" type="checkbox"/>	6" front wheels, 150 x 30 PU, black tires	0,-
D22003	<input type="checkbox"/>	Front wheels: 5" – 125 x 27 PU	95,-

## TRAYS

D21050	<input type="checkbox"/>	Tray reinforced	399,-
D21052	<input type="checkbox"/>	Upholstery for tray	126,-

## VARIOUS ACCESSORIES

D21239	<input type="checkbox"/>	Toolkit	105,-
--------	--------------------------	---------	-------



## NETTI CUSTOMIZED

Netti has many years of experience in developing customized solutions. Feel free to contact us for a quote concerning your individual solution.

### CUSTOM MADE – most wanted special adapted items (price on request)



[A]



[B]

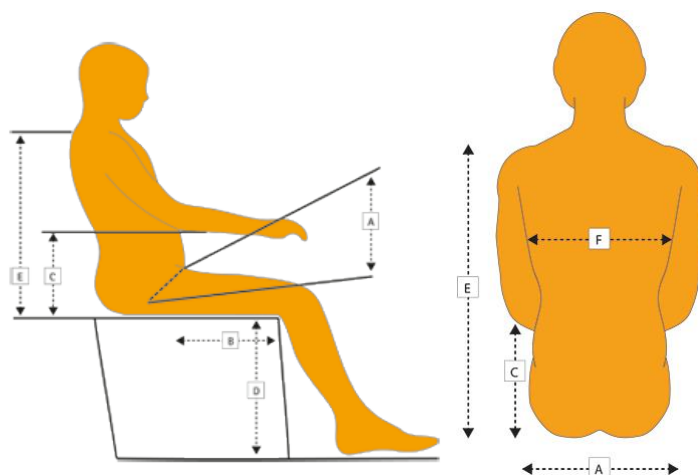
- |                          |  |
|--------------------------|--|
| <input type="checkbox"/> | [A] Netti Nature buggy wheel for trips on uneven surfaces, on the beach or in the forest.<br>Standard front wheels will also be supplied |
| <input type="checkbox"/> | [B] Hood to protect from wind, rain, or impressions  |



## TECHNICAL DATA

Tilt (seat)	-3° to +35°
Recline (back)	90° to 125°
Seat height	440 mm with 16" wheels 470 mm with 22" wheels
Total width of the wheelchair	With 16" = SW +155 mm With 22" = SW +345 mm With 22" and mudguards = SW +360 mm
Total length	920-1060 mm with leg supports
Total height without head support	885 mm
Distance arm support to seat plate	Min. 120 mm / max 290 mm Can be lowered to seat plate level for easy transfer
Weight of wheelchair	SW 350 mm: 24,5 kg (without head support, leg supports and cushions)
Frame colour	White
Covers	Stretchable, breathable & flexible cover 3D. Back cushion in black-red.
Crash test	ISO 7176-19 (75 kg)

Leg supports	Min. lower leg length	Max. lower leg length
Angle adjustable leg supports	290 mm	390 mm
Universal leg supports	220 mm	320 mm



### Measurements

A Hip width/Seat width	_____ mm
B Thigh length / seat depth	_____ mm
C Arm rest height	_____ mm
D Leg length / seat height	_____ mm
E Backrest height	_____ mm
F Trunk width	_____ mm